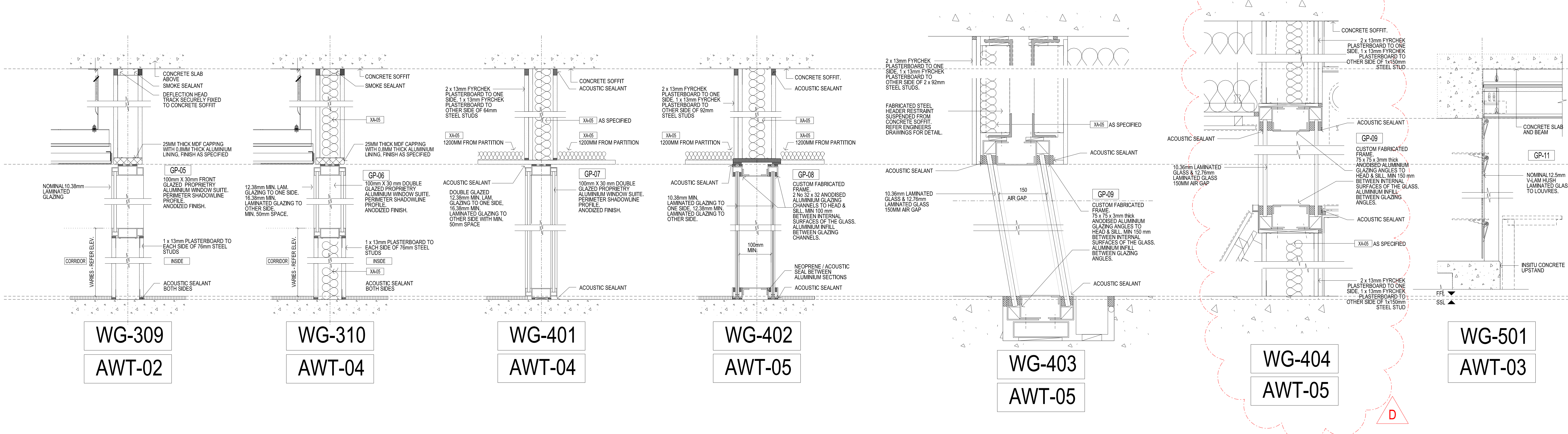
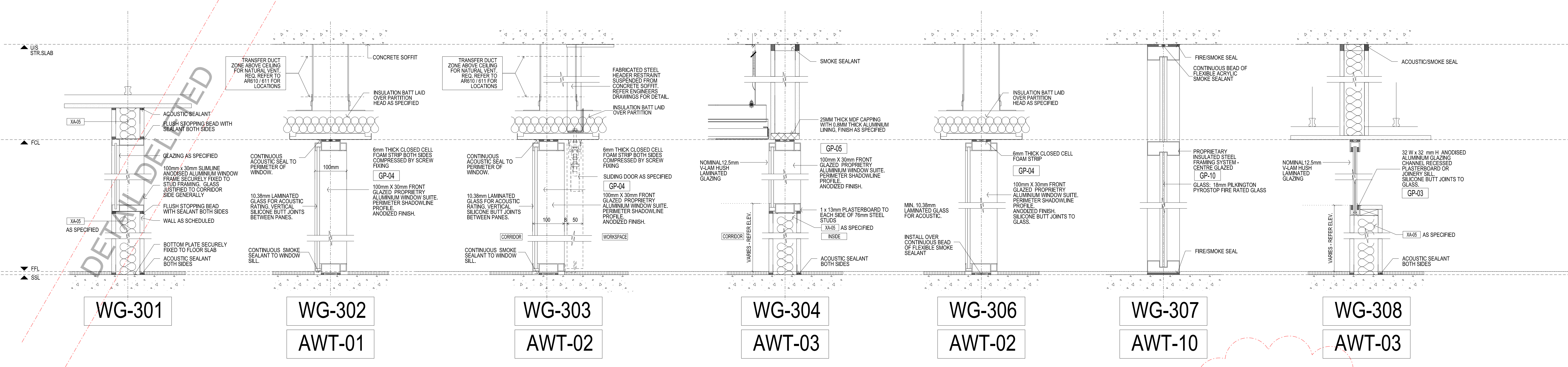
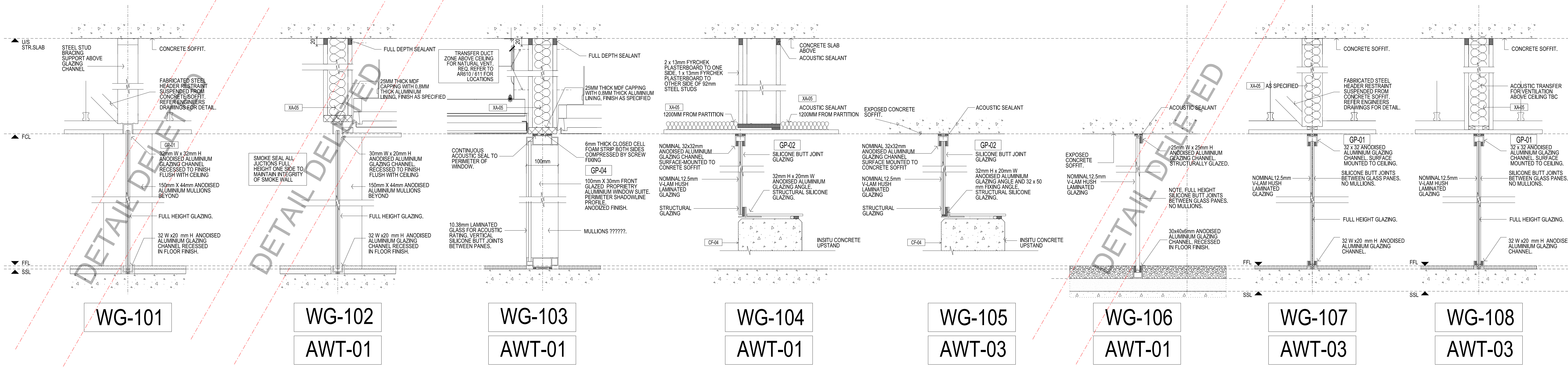


CONTRACTORS SHALL VERIFY JOB DIMENSIONS BEFORE ANY JOB COMMENCES. ALL SHOP DRAWINGS SHALL BE SUBMITTED TO THE SUPERINTENDENT AND MANUFACTURER SHALL NOT COMMENCE FROM THE RETURN OF UNAWARDED SHOP DRAWINGS ISSUED BY THE CONSULTANT. DIMENSIONS SHALL TAKE PRECEDENCE OVER SCALE. THIS DRAWING SHALL BE READ IN CONJUNCTION WITH ALL RELEVANT CONTRACT SPECIFICATIONS AND DRAWINGS COPYRIGHT OF THIS DRAWING IS VESTED IN NADAAA

General Notes

- 
- 
- REFER TO AECOM SCHEDULE OF ACOUSTIC PARTITION TYPES

Acoustic Transfers - Refer to AR610 & AR611 for Acoustic Transfer Bulkhead / Duct Locations  
 - Refer to Aecom, U.L.A. Mechanical Engineer Specification & Drawings for Requirements



Rev	Issue	Revision Description	And	Date
D	SG	WALL TYPE ADDED	-	18.12.13
C	SG	UPDATES AS CLOUDED	-	13.11.13
B	SG	UPDATED WG DETAILS TO DELETE BAFFLE	-	17.08.13
A	SG	UPDATES TO INCLUDE ACOUSTIC REVISIONS	-	20.08.13
WALL TYPES ADDED				
03	SG	WG-102 SUPERSEDED	-	18.07.13
02	SG	100% CD - TENDER ISSUE	-	07.09.12
01	SG	95% CD ISSUE	-	10.08.12



NADAAA

NADAAA  
 1920 Washington Street No.2 Boston Massachusetts 02118 USA  
 Telephone +1 817 442 8232 Facsimile +1 888 442 1417 Email nadaaa@nadaaa.com

John Wardle Architects  
 25 Rokeby Street, Collingwood, Victoria 3066 Australia  
 Tel: +61 3 8662 0400 www.johnwardlearchitects.com  
 © 2012 John Wardle Architects ABN 83 006 814 268

Client University of Melbourne  
 Parkville Campus  
 Project Faculty of Architecture  
 Building and Planning

Title WALL TYPE DETAILS  
 SHEET 6

Project No.	0913	Scale	1:5 @ A0 1:10 @ A2
Drawing No.	AR7505	Revision	D

Date: Dec 2011 Drawn - Co-Ord - Check -

FILENAME - \$FILES  
 FOR CONSTRUCTION